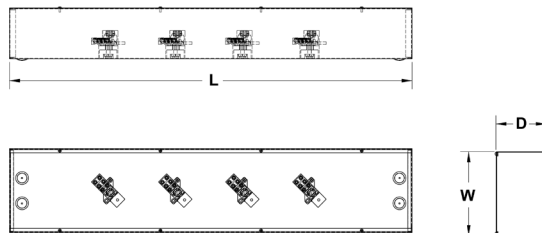
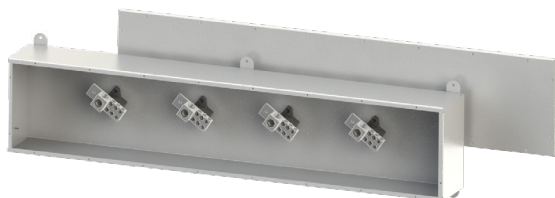


PAD WEATHERPROOF - SPLITTER TROUGH - ALUMINUM - CSA 3 (400-600amp)

The PAD-WP-A splitter troughs are designed for 600 V (max.) service, 3 or 4 wires.

- 10 Ga or 12 Ga aluminum
- Neoprene gasket
- Screw cover
- Factory Installed PADS
- CSA Certified
- Stocked in Port Coquitlam

Options include: hinged cover and painted.



SPLITTERS, BUSGUTTERS & LUGS

CAT No:		Main Lugs			Branch Lugs		Enclosure Size & Weight			
3 Wire	4 Wire	Amp	Qty.	Wires	Qty.	Wires	L	W	D	LBS
PAD-WP-A-3643	-----	400	2	1/0-250 MCM or 1 x 4-600 MCM	2 X	14-3/0 and 4 X 6-4/0	36	10	6	28.0
PAD-WP-A-4843	PAD-WP-A-4844						48	10	6	36.0
PAD-WP-A-6043	PAD-WP-A-6044						60	10	6	50.0
PAD-WP-A-7243	PAD-WP-A-7244						72	10	6	55.0
PAD-WP-A-4863	PAD-WP-A-4864	600	4	1/0-250 MCM or 2 x 4-600 MCM	2 X	14-3/0 and 4 X 6-4/0	48	10	6	37.0
PAD-WP-A-6063	PAD-WP-A-6064						60	10	6	50.0
PAD-WP-A-7263	PAD-WP-A-7264						72	10	6	53.0

Custom sizes available