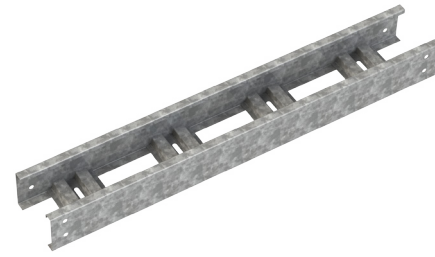


STEEL - LADDER - STRAIGHT LENGTH

CSA CLASS D

Trays are constructed from pre-galvanize steel.



LADDER			
Rung Spacing		Width	
cm	in	cm (W)	in
15	6	15	6
22	9	30	12
30	12	45	18
45	18	60	24
		75	30
		90	36

*Imperial measurements are for reference only
*Custom width available on request

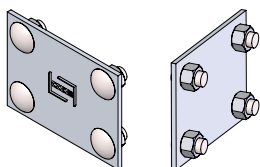
HOW TO ORDER - EXAMPLE: SLD630-30				
Steel	Ladder	Class	Rung Space	Width
S	L	D	30	30
S	L	D6	30	30

*Length is 3 meters

			CSA C22.2 #126.1-98	
			Span, m (ft)	Load kg/m (lb/ft)
SLD			3 m (10 ft)	179 kg/m (120 lb/ft)
SLD6			3 m (10 ft)	179 kg/m (120 lb/ft)

SPYDERLOK

The original quick connector included with all fittings and tray.



RUNG PROFILE

