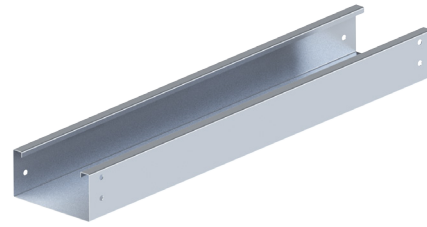


ALUMINUM - SOLID - STRAIGHT LENGTH

CSA CLASS D

Trays are constructed from 5052 H32 aluminum.



SOLID	
Width	
cm (W)	in
15	6
30	12
45	18
60	24
75	30
90	36

**Imperial measurements are for reference only*

HOW TO ORDER - EXAMPLE: ASD6-30			
Aluminium	Solid	Class	Width
A	S	D	30
A	S	D6	30

**Length is 3 meters*

CSA C22.2 #126.1-98	
Span, m (ft)	Load kg/m (lb/ft)

ASD	<p>H for ASD: 115mm (4 1/2") H for ASD6: 150mm (6")</p>	3 m (10 ft)	179 kg/m (120 lb/ft)
ASD6			

SPYDERLOK

The original quick connector included with all fittings and tray.

