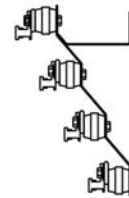
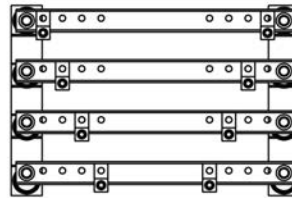
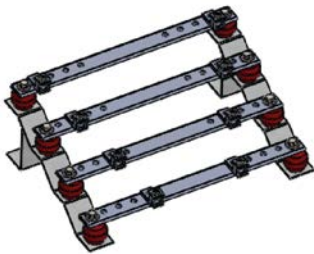
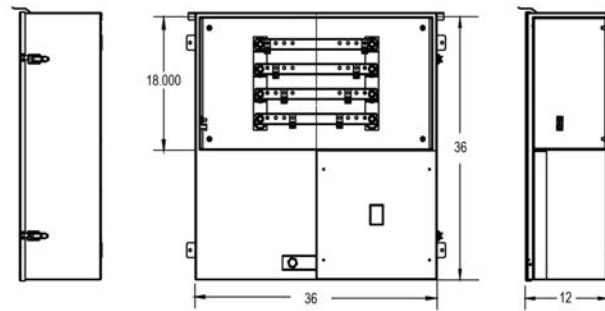


# BC HYDRO - SERVICE ENTRANCE ENCLOSURE (200AMP)

Wall mounted CSA 3R service entry enclosure built to BC Hydro distribution standards. Used in conjunction with appropriate meter base as a complete BC Hydro secondary service solution for both temporary or permanent connections. Fully wired and bused of ease of installation. Custom designs available. Designed and built to comply with the latest BC Hydro distribution standards and therefore acceptable by BC Hydro for connection to the BC Hydro distribution system.

## RATINGS: CSA Certified 3R Enclosure & Certified for use by BC Hydro

- 25 KA @ 600V Main Breaker
- Wall-mounted design
- Ground ball and ground bar included
- Weatherproof
- Service entrance rated
- Hinged door - padlock-able
- Dual padlock capable



CAT No:	MAIN BREAKER	PHASE	VOLTAGE	SIZES
BCHSE-S-0200-1	200A	1	120/240	36 x 36 x 12
BCHSE-S-0200-3	200A	3	600	36 x 36 x 12

BC HYDRO / FORTIS