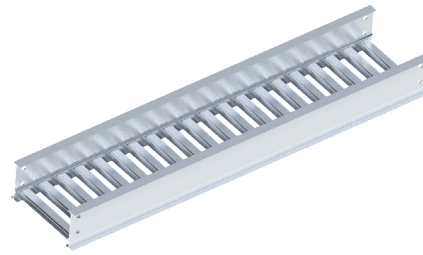


# ALUMINUM - VENTILATED - STRAIGHT LENGTH

## CSA CLASS D

Trays are constructed from 6063 T6 extrusions.



VENTILATED			
Rung Spacing		Width	
cm	in	cm (W)	in
5	2	15	6
		30	12
		45	18
		60	24
		75	30
		90	36

HOW TO ORDER - EXAMPLE: AVD6-30			
Aluminum	Ladder	Class	Width
A	V	D	30
A	V	D3M	30
A	V	D6	30

\*Standard 6 meter lengths available in 3 meter lengths

\*Imperial measurements are for reference only  
\*Custom width available on request

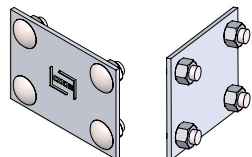
\*Max 50mm / 2" spacing between rungs

		CSA C22.2 #126.1-98	
		Span, m (ft)	Load kg/m (lb/ft)
AVD		3 m (10 ft)	179 kg/m (120 lb/ft)
		6 m (20 ft)	67 kg/m (45 lb/ft)
AVD3M		3 m (10 ft)	179 kg/m (120 lb/ft)
		6 m (20 ft)	67 kg/m (45 lb/ft)
AVD6		3 m (10 ft)	179 kg/m (120 lb/ft)
		6 m (20 ft)	67 kg/m (45 lb/ft)

\*D3m must be supported every 3 meters (10 ft)

## SPYDERLOK

The original quick connector included with all fittings and tray.



NARROW RUNG (for 15cm - 60cm width)	WIDE RUNG (for 75cm & 90cm width)