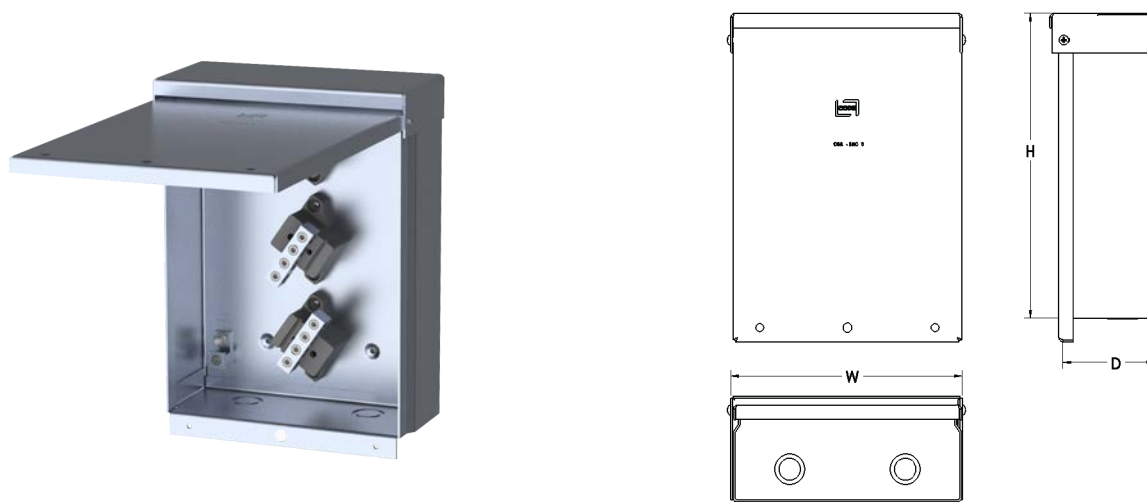


The TR boxes are used as junction boxes in outdoor or indoor installations where dripping water is a problem. The enclosures are complete with hinged cover, that acts as a rain hood preventing water from reaching electrical components.

- 12 Ga aluminum
- 125-225 amp capacities
- One-sided, concentric knockouts
- CSA Certified
- Stock Port Coquitlam

**Options include:** custom horizontal mounting brackets & mounting pedestals.



Lugs		
Amps	Main	Branch
125	1 x 14-2/0	3 x 14-2/0
225	1 x 6-300MCM	2 x 14-2/0 + 1 x 6-300 MCM

CAT No:	AMP	H	W	D	LBS
TR-A-1	125	12	9	3.75	4.0
TR-A-2	225	14	11	4.5	5.0

SPLITTERS, BUSGUTTERS & LUGS