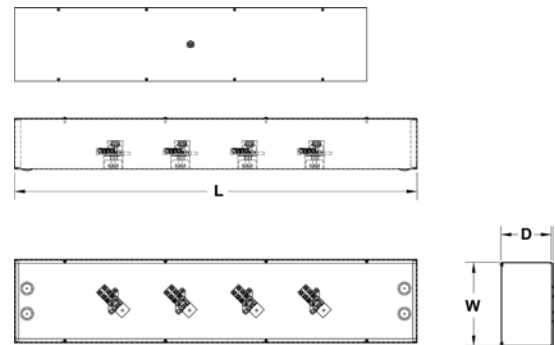
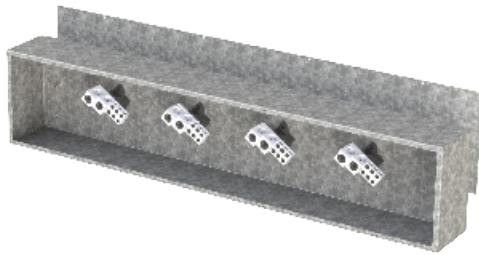


# PAD TYPE - SPLITTER TROUGH - STEEL GALVANIZED - CSA 1 (400-600amp)

The PAD-G splitter troughs are designed for 600 V (max.) service, 3 or 4 wires.

- 14 Ga or 16 Ga steel galvanized
- Mounting holes in back
- Screw cover
- Factory Installed PADs
- CSA Certified
- Stocked in Port Coquitlam

Options include: hinged cover and custom colors.



CAT No:		Main Lugs			Branch Lugs		Enclosure Size & Weight			
3 Wire	4 Wire	Amp	Qty.	Wires	Qty.	Wires	L	W	D	LBS
PAD-G-3643	-----	400	1	2 x 1/0-250 MCM or 1 x 4-600 MCM	2 x 14-3/0 and 4 x 6-4/0		36	10	6	28.0
PAD-G-4843	PAD-G-4844						48	10	6	36.0
PAD-G-6043	PAD-G-6044						60	10	6	50.0
PAD-G-7243	PAD-G-7244						72	10	6	55.0
PAD-G-4863	PAD-G-4864	600	1	4 x 1/0-250 MCM or 2 x 4-600 MCM	2 x 14-3/0 and 4 x 6-4/0		48	10	6	37.0
PAD-G-6063	PAD-G-6064						60	10	6	50.0
PAD-G-7263	PAD-G-7264						72	10	6	53.0

Custom sizes available

SPLITTERS, BUSGUTTERS & LUGS