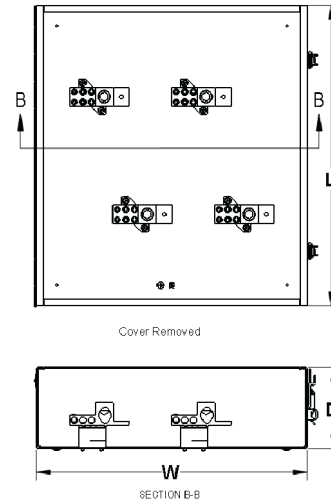
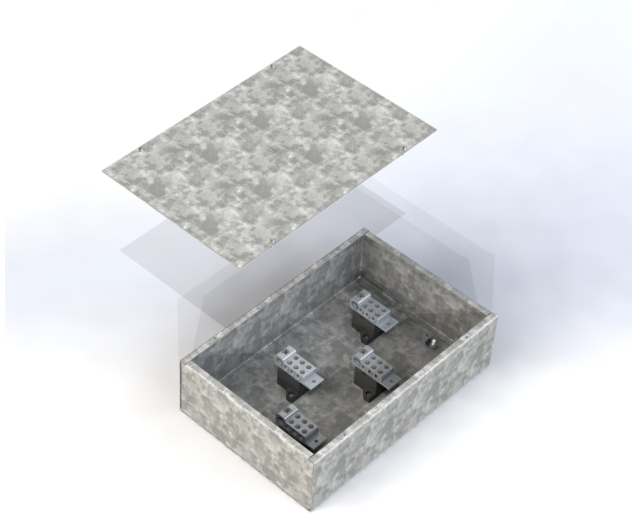


PAD TYPE - SPLITTER BOXES - STEEL GALVANIZED- CSA 1

The PAD splitter boxes are designed for 600 V (max.) service, 3 or 4 wires. The splitter blocks are factory installed.

- 14 Ga galvanized steel
- Mounting holes in back
- Screw cover
- Factory installed pads
- CSA Certified
- 600V rated
- Stock Port Coquitlam

Options include: hinge cover, weatherproof, and custom paint colors.



SPLITTERS, BUSGUTTERS & LUGS

CAT No:		Main Lugs			Branch Lugs		Enclosures Sizes & Weights			
3 Wire	4 Wire	Amp	Qty.	Wires	Qty.	Wires	L	W	D	LBS
PAD-B-G-103	PAD-B-G-104	125	1	14-1/0	6	14-2	12	12	4	11
PAD-B-G-203	PAD-B-G-204	225	1	6-300 MCM	6	14-2/0	18	12	5	16
PAD-B-G-403	PAD-B-G-404	400	2	1/0-250 MCM or 1 x 4-600 MCM	2	14-3/0 and 4 x 6-4/0	22	20	6	34
PAD-B-G-603	PAD-B-G-604	600	4	1/0-250 MCM or 2 x 4-600 MCM	2	14-3/0 and 4 x 6-4/0	26	25	7	49