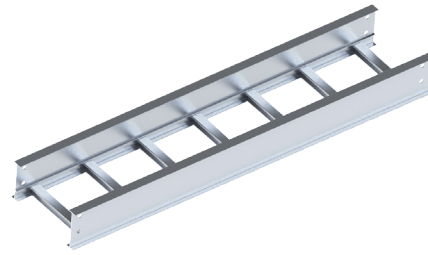


ALUMINUM - LADDER - STRAIGHT LENGTH

CSA CLASS D

Trays are constructed from 6063 T6 extrusions.



LADDER			
Rung Spacing		Width	
cm	in	cm (W)	in
15	6	15	6
22	9	30	12
30	12	45	18
45	18	60	24
		75	30
		90	36

HOW TO ORDER - EXAMPLE: ALD630-30				
Aluminum	Ladder	Class	Rung Space	Width
A	L	D	30	30
A	L	D3M	30	30
A	L	D6	30	30

*Standard 6 meter lengths available in 3 meter lengths (ALD630-30-3m)

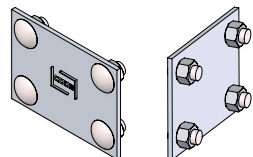
*Imperial measurements are for reference only
*Custom width available on request

			CSA C22.2 #126.1-98	
			Span, m (ft)	Load kg/m (lb/ft)
ALD			3 m (10 ft)	179 kg/m (120 lb/ft)
			6 m (20 ft)	67 kg/m (45 lb/ft)
ALD3M			3 m (10 ft)	179 kg/m (120 lb/ft)
			6 m (20 ft)	67 kg/m (45 lb/ft)
ALD6			3 m (10 ft)	179 kg/m (120 lb/ft)
			6 m (20 ft)	67 kg/m (45 lb/ft)

*D3m must be supported every 3 meters (10 ft)

SPYDERLOK

The original quick connector included with all fittings and tray.



NARROW RUNG (for 15cm - 60cm width)	WIDE RUNG (for 75cm & 90cm width)