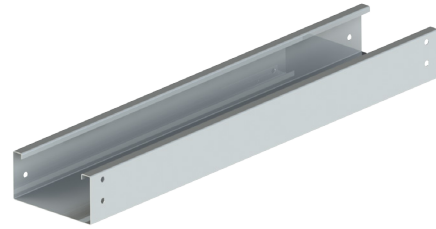


STAINLESS STEEL - SOLID - STRAIGHT LENGTH

CSA CLASS E

Trays are constructed from stainless steel 304 or 316.



SOLID	
Width	
cm (W)	in
15	6
30	12
45	18
60	24
75	30
90	36

HOW TO ORDER - EXAMPLE: SSSE-30			
Stainless Steel	Solid	Class	Width
SS	S	E	30
SS	S	E6	30

*Length in 3 meters

*Imperial measurements are for reference only
*Custom width available on request

		CSA C22.2 #126.1-98	
		Span, m (ft)	Load kg/m (lb/ft)
SSSE	<p>H for SSSE: 115mm (4 1/2") H SSSE6: 150mm (6")</p>	3 m (10 FT)	299 kg/m (200 lb/FT)
SSSE6			

SPYDERLOK

The original quick connector included with all fittings and tray.

