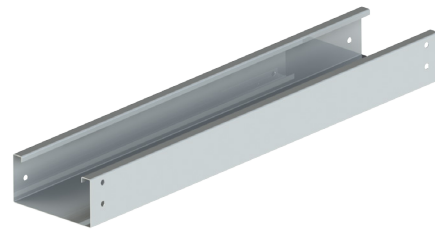


# STAINLESS STEEL - SOLID - STRAIGHT LENGTH

## CSA CLASS C

Trays are constructed from stainless steel 304 or 316.



SOLID	
Width	
cm (W)	in
15	6
30	12
45	18
60	24
75	30
90	36

HOW TO ORDER - EXAMPLE: SSSC-30			
Stainless Steel	Solid	Class	Width
SS	S	C	30
SS	S	C6	30

\*Length in 3 meters

\*Imperial measurements are for reference only  
\*Custom width available on request

		CSA C22.2 #126.1-98	
		Span, m (ft)	Load kg/m (lb/ft)
SSSC	<p>H for SSSC: 102mm (4") H for SSSC6: 150mm (6")</p>	3 m (10 FT)	97 kg/m (65 lb/FT)
SSSC6			

## SPYDERLOK

The original quick connector included with all fittings and tray.

