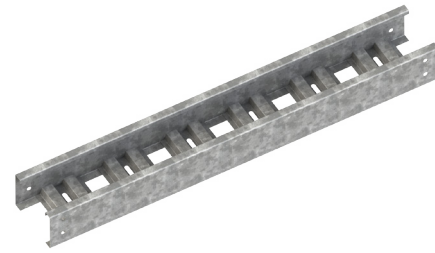


# STEEL - VENTILATED - STRAIGHT LENGTH

## CSA CLASS D

Trays are constructed from pre-galvanize steel.



VENTILATED			
Rung Spacing		Width	
cm	in	cm (W)	in
5	2	15	6
		30	12
		45	18
		60	24
		75	30
		90	36

HOW TO ORDER - EXAMPLE: SVD6-30			
Steel	Ventilated	Class	Width
S	V	D	30
S	V	D6	30

\*Available in 3 meter lengths

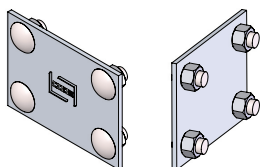
\*Imperial measurements are for reference only  
\*Custom width available on request

\*Max 50mm / 2" spacing between rungs

		CSA C22.2 #126.1-98	
		Span, m (ft)	Load kg/m (lb/ft)
SVD		3 m (10 ft)	179 kg/m (120 lb/ft)
SVD6			

## SPYDERLOK

The original quick connector included with all fittings and tray.



## RUNG PROFILE

